



Community Requests for Increased Park Amenities and Recreational Spaces in Ocean Beach

Spring 2021 Report

Looking Forward

- The purview of the Ocean Beach Planning Board Parks Subcommittee is to review the accessible park space in the Ocean Beach area for the quality and usefulness of existing amenities and suggest upgrades focused on equity, safety, climate action goals, art, and promoting healthy and active lifestyles in accordance with the City of San Diego's Parks Master Plan.
- Our vision is to bring the many benefits of great parks and recreational opportunities to all residents and visitors by planning comfortable, active, safe spaces for social connections that feature quality amenities for diverse interests, ages, and abilities.



Proposed Saratoga Park Improvements

Introduction

The Ocean Beach Planning Board's Parks Subcommittee was formed in May of 2020 to review the current status of neighborhood parks within the Ocean Beach Planning Zone and make suggestions on ways to enhance the usability, accessibility, and amenities within said parks. By meeting with community members and stakeholders to gather their insight on our local parks, we have compiled a list of requested improvements to present to the City of San Diego's Parks & Recreation Department. Parks reviewed include:

1

Veterans Park

Veterans Plaza will enhance accessibility to natural spaces while incorporating placemaking elements to foster community building and remembrance of our US military veterans.

2

Saratoga Park

A beautiful yet underutilized oceanfront park, Saratoga Park is in the midst of a revitalization effort that will increase fitness options for adults and children of all abilities and take into account a wide range of different uses.

3

Ebers Street Park

A family-focused neighborhood pocket park adjacent to the Ocean Beach Recreation Center, Ebers Street Park is in need of updates to support the health and safety of the many local children that use the playground and grassy area.

4

Collier Park

This pocket park could be updated to increase user enjoyment with an expanded picnic area, a nature-based exploratory playground, and specialty recreational amenities.

5

Spray Street/Dog Beach Park

Located near the world-famous Dog Beach, Spray Street Park is currently underutilized and community members have requested enhancements designed to make the park a more active space.

6

Robb Field

The largest recreation area in Ocean Beach, Robb Field is a great community asset that can be expanded to provide more amenities and support a diverse range of activities and interests.

7

Dusty Rhodes Park

A multi-use field, dog park, and playground plagued by maintenance and accessibility issues. ADA pathways and playground substrate are requested, along with additions of a dedicated soccer field and modified maintenance schedule.

Veterans Park

The planned **Veterans Plaza** in Veterans Park will enhance accessibility to natural spaces while incorporating placemaking elements to foster community building and remembrance of our US military veterans.

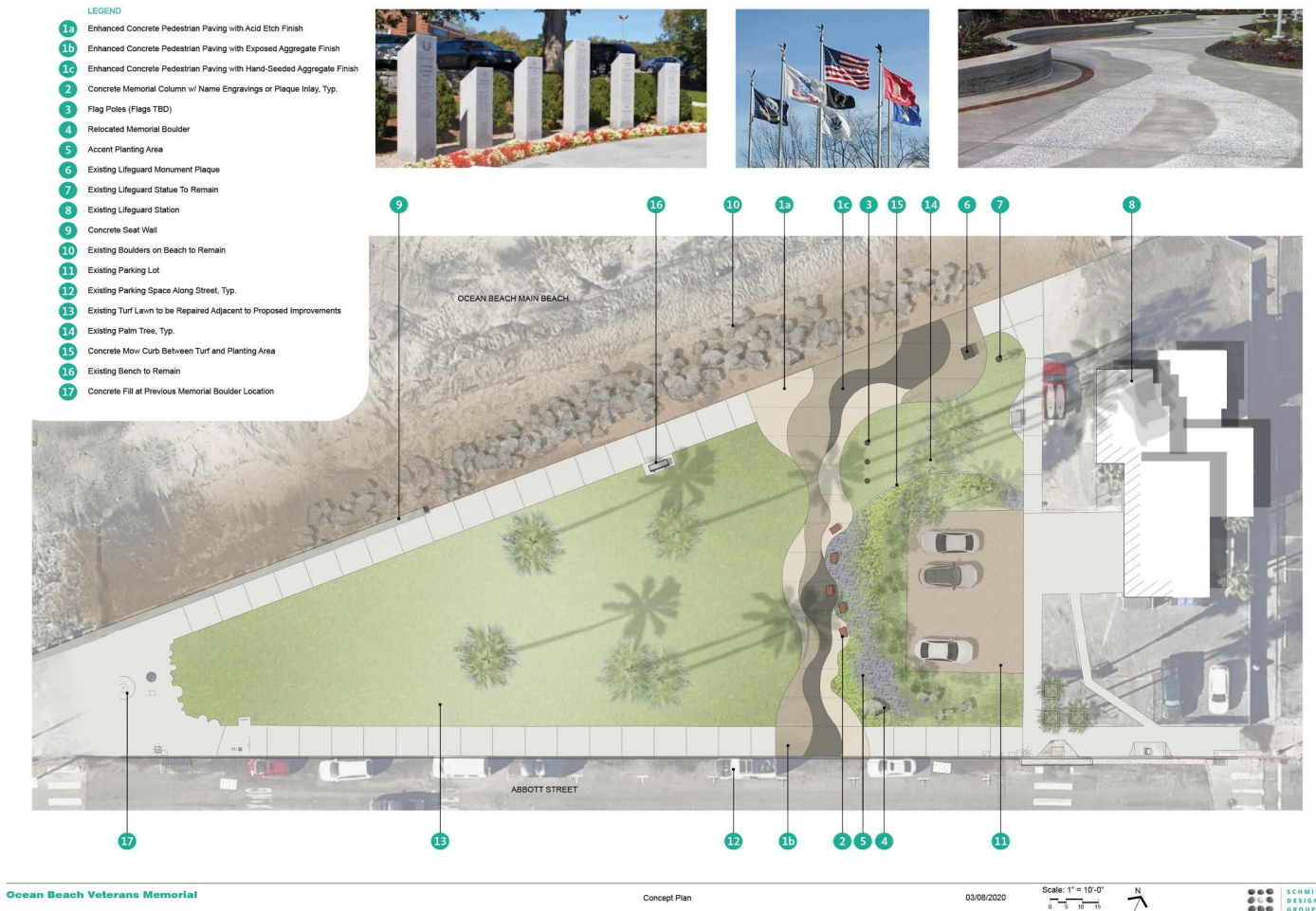
Proposed Improvements

Currently under design as a project of the Ocean Beach Community Development Corporation (OBCDC), the proposed Veterans Park Improvements include the implementation of a walkway to increase access to the beach from Abbott Street, as well as providing placemaking elements and interactive elements to honor US military veterans.

An integrated wayfinding system will increase connectivity to nearby transit and trail systems, thereby supporting equity and access to natural spaces.

Schmidt Design Group has donated their time and talent to the community in providing the initial designs, and a fundraising effort is underway to support the construction of this beautiful seaside plaza and monument to our Armed Forces.

A steering committee led by the OBCDC and comprised of members of the OB Town Council, OB MainStreet Association, and OB Planning Board has been appointed to the project.



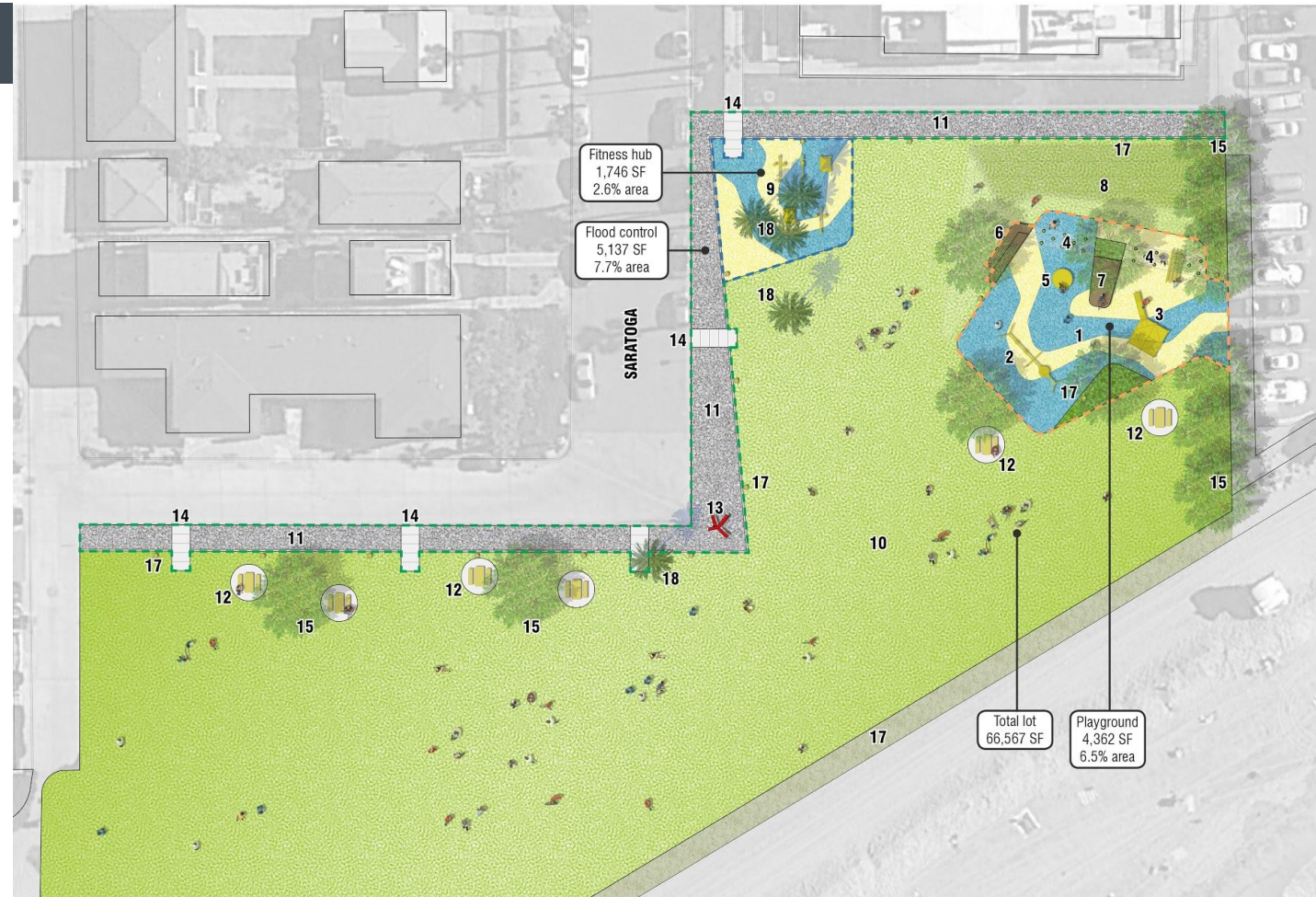
Saratoga Park

A beautiful oceanfront park, Saratoga Park is in the midst of a revitalization effort that will increase fitness and activity options for adults and children of all abilities.

Proposed Improvements

Another current project of the OBCDC, Saratoga Park revitalization plans call for adult fitness stations and a children's playground specifically designed to incorporate the highest level of accessibility. Selection of activity equipment and site arrangement will take into account a wide range of different uses and create fitness and play spaces that will strengthen generational bonds and encourage an active lifestyle for all community members.

Multiple town halls and design charrettes were conducted to arrive at a design solution that takes into account many different user groups within the park. Proposed amenities improvements include adding a 0-12 age playground with accessible equipment, additional seating, a fitness hub, art sculpture, and shade trees, while retaining a large grass space for active use.



- ### LEGEND
- 1 0-12 age playground
inclusive play structures on poured in place rubberized surfacing
 - 2 swings
individual, group and inclusive swings to encourage socializing
 - 3 climber
rope climber with integrated slide
 - 4 climbing mound
sloped edge with rubberized climbing domes and climbing bars
 - 5 spinner
group spinning structure
 - 6 terraced seating
cladding with composite slats providing seating for parents
 - 7 seating platform
cladding with composite slats providing seating for parents
 - 8 mounded lawn
to provide a play feature and provide and buffer for the playground
 - 9 fitness hub
fitness stations on poured in place rubberized surfacing
preserve existing palm trees in place
 - 10 multi-functional lawn
existing lawn area to be enhanced and maintained
 - 11 decorative gravel edge
to provide a edge protection and occasional flood control
 - 12 picnic
re-purposed concrete picnic tables set on concrete pads
 - 13 art sculpture
to involve the commission for arts and culture
 - 14 concrete crossings
walkway connection over decorative gravel edge
 - 15 shade tree
city standard of minimal height, leaf litter and water consumption
 - 16 drinking fountain
city standard at playground and fitness hub
 - 17 led exterior pole lighting
city standard
 - 18 existing palm to remain
 - 19 existing sand berm
to replant for establishment of native coastal grasses



Ebers Street Park

This family-focused pocket park adjacent to the Ocean Beach Recreation Center is in need of updates to support the health and safety of the many local children that use the playground and grassy area.

Proposed Improvements

Set in the midst of a family neighborhood and across the street from Ocean Beach Elementary School, this park is highly utilized by local children and their caregivers. Requested improvements at Ebers Street Park include fencing around the play structures to prevent children running into the street, shade structures over play equipment, recreation options for older children (i.e. climbing wall), water bottle fill station, solar powered lighting, a community garden partnered with the local seed library, and a community message board.



Collier Park

Tucked into a quiet neighborhood, Collier Park is utilized by local residents as a connection to the nearby Native Plant Garden and would benefit from expanded amenities to increase interaction with and enjoyment of natural spaces.

Proposed Improvements

This small community park borders the Native Plant Garden, and is utilized by urban residents as a connection to natural spaces. This park would be greatly benefitted by an all-weather picnic pavilion, the addition of a nature playground, and specialty recreation activity spaces.



Spray Street Park (Brighton Ave.)

Located near the world-famous Dog Beach, Spray Street Park is currently underutilized and community members have requested enhancements designed to make the park a more active space.

Proposed Improvements

This community park space refers to the grassy area that borders the Dog Beach Parking Lot to the East/Northeast. Community member requests for Spray Street Park include the incorporation of 6 cycle track stations to support active fitness goals, a designated picnic area, safety measures to prevent vehicles on grass area, a community garden/pollinator garden, as well as a wayfinding signage system and public art piece.

The footprint of the park is awkward and not conducive to large group sport activities. This park is mostly frequented by families who are visiting the beach, adult residents and dogs of the community, engaging in solo activities and small workout groups.

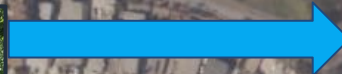
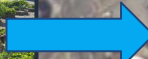


Robb Field

The largest recreation space in Ocean Beach, Robb Field is a great community asset that can be updated to provide more recreational amenities and support a diverse range of activities and interests.

Proposed Improvements

Robb Field Athletic Field is the main recreation space in Ocean Beach, and home to many activities that draw users from all over San Diego. Community requests include the addition of a disc golf training course around the perimeter of the park, a bike path connecting the San Diego River bike trail to Bacon Street, an updated playground, a community art wall, horseshoe pits along the West side of the fields, and a community garden space.



Dusty Rhodes Park

A multi-use field, dog park, and playground plagued by maintenance and accessibility issues, Dusty Rhodes Park is primed for an update. This high-volume park with City-wide usage is in need of ADA accessible pathways and playground substrate, along with community-requested additions of a dedicated soccer field and modified maintenance schedule.

Proposed Improvements

Requested improvements to Dusty Rhodes Park include: an ADA accessible trail connecting the two parking lots, (Shown as “Line E” in Figure 1), the addition of an ADA accessible playground substrate; benches, shade structures, lighting, top-operated watering station, and a gravel entrance area in the dog park to increase usability, a dedicated soccer field with lighting, bleachers/benches and goal posts, water bottle stations and protective fencing near playground, and a request to partition the dog park in thirds so that one-third may be rotated out to address ongoing maintenance issues.

Figure 1 -->



Dog Park Access and Usability Issues

On-site interviews with frequent users of the dog park were undertaken to assess the usability and accessibility issues from the park. Persons interviewed had these requests:

1. Shade trees or sail structures along the chain link fence perimeter area shown in Figure 1.
2. Bounded gravel area at the interior and exterior entry to mitigate standing water issues which are a threat to dog health. Users of the park have stacked rocks to try and correct, but need a better solution.
3. Another entry/exit gate at the South edge of the dog park to make it easier for users to access the restroom facility. There is currently no access.
4. Everyone interviewed said that the water station is in need of replacement. It's frequent malfunction is due to it having a push-button operation near the base of the unit which gets full of dirt. The fountain gets stuck in the on position and overflows, resulting in a standing water/mud puddle.



Additional Considerations

In addition to measuring area parks against the City of San Diego’s Parks Master Plan, the OBPB Parks Subcommittee carried out a series of community discussions focused on accessibility and equity in our parks system, along with examining themes of usability, wellness opportunities, and the ways in which our parks are used as a space for enhanced community building.

Accessibility & Equity Public parks and playgrounds are an important environment for leisure activity in urban spaces, which all generations and people of all abilities should be able to enjoy at low or no cost. Valuing equity and universal accessibility of public parks and recreational facilities is essential to ensuring the improvement of mental and physical health for all users.



Usability Ensuring that residents can easily enjoy parks and recreational facilities is a key factor in urban planning. Increased lighting is a recurring issue in Ocean Beach park evaluations - particularly in the winter months, it is a needed component in facilitating after-work enjoyment of park spaces.

Health The role of parks in improving the overall health and wellness of the community cannot be overstated. Access to parks and other recreation facilities is consistently related to higher physical activity levels for both adults and youth. Open space and active lifestyles have been shown to support a sense of increased well-being among residents.



Community Parks and recreational activities offer opportunities for people from all age groups and all walks of life to interact and learn from one another, thereby strengthening community ties and adding societal value to neighborhoods.

Conclusion

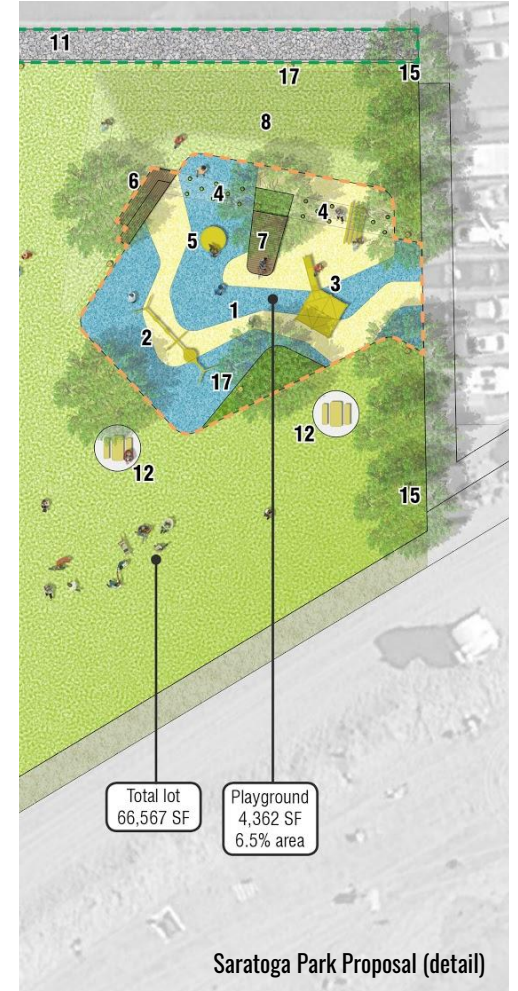
- Of the seven parks evaluated by the Ocean Beach Planning Board Parks Subcommittee, there are three that will most directly benefit from improved amenities. Those are:
 - Spray Street Park
 - Saratoga Park
 - Ebers Street Park
- We identified several potential **accessibility issues** which could restrict participation of persons with disabilities. These are particularly prevalent at **Robb Field and Dusty Rhodes Park** and should be addressed as soon as possible. However, because Robb Field and Dusty Rhodes Park improvements are outside of the purview of the Ocean Beach Planning Board, this Subcommittee will limit its requests to parks within its planning area borders.



Ebers Street Park



Robb Field Play Area



Saratoga Park Proposal (detail)

Thank you **for your attention**

We appreciate your work to create a parks system that provides the greatest benefit to residents and visitors in the Ocean Beach area, and look forward to a continuing conversation on ways in which to support active and healthy citizens in our community through the expansion of local recreational amenities.

Contact

Nicole Ueno
Chair, Ocean Beach Planning Board Parks Subcommittee
Nicole@propatriagroup.com