

April 28, 2020

Subject: ADA S/W Group 3E W Point Loma Project

Dear Resident:

The City of San Diego is at the final stage of the design phase for ADA S/W Group 3E West Point Loma project located in the public right-of-way. This project will provide a roundabout and missing sections of sidewalks and curb ramps at the Bacon Street & West Point Loma Boulevard intersection. The project will also construct a complete pedestrian path along West Point Loma Blvd. from Seaside Street to Valeta Street through the Nimitz Boulevard & West Point Loma Boulevard intersection.

- **Project Name – ADA S/W Group 3E W Point Loma**
- **Construction Schedule** – Construction is anticipated to begin in Winter 2020 and will be completed in Spring 2022.
- **Normal Construction Days & Hours** - Monday through Friday from 7:00 a.m. to 3:30 p.m.
- **Construction Notices** – You will receive a mailed notice prior to the start of construction. In addition, the City's contractor will deliver a door hanger with the approximate date that construction will begin to the area surrounding the project.
- **Street Access and Parking** – Traffic control will be implemented during construction; access to homes and businesses will be maintained at all times.
- **Questions or Concerns** – For information about the Capital Improvements Program please visit www.sandiego.gov/cip. For project-specific questions contact the **Public Works Department** at (619) 533-4207 or email engineering@sandiego.gov. Please reference ADA S/W Group 3E W Point Loma Project in your inquiry.

Thank you for your patience and cooperation during the design and construction of this important improvement project.

Sincerely,

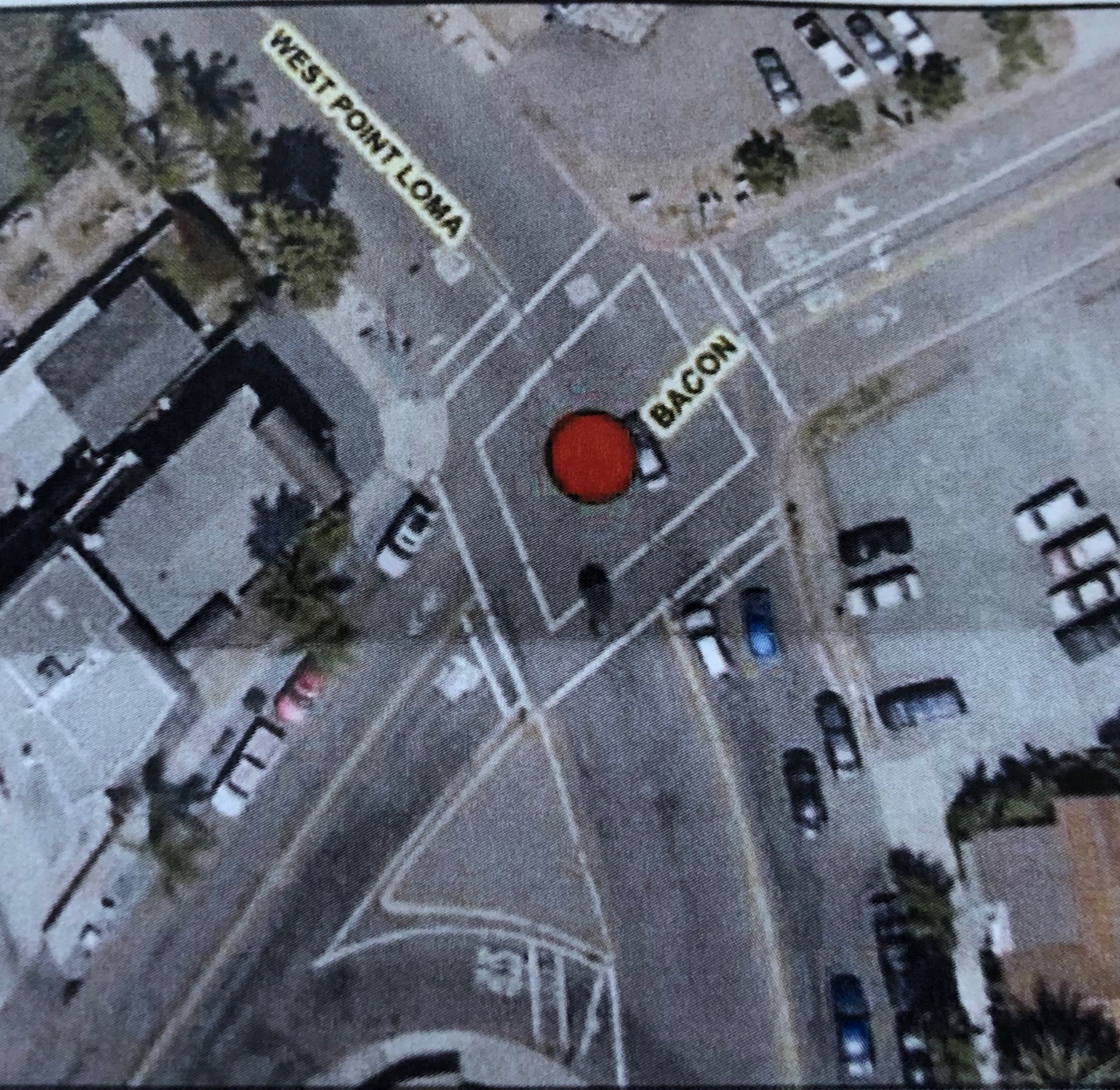


Steven Bliss
Project Manager

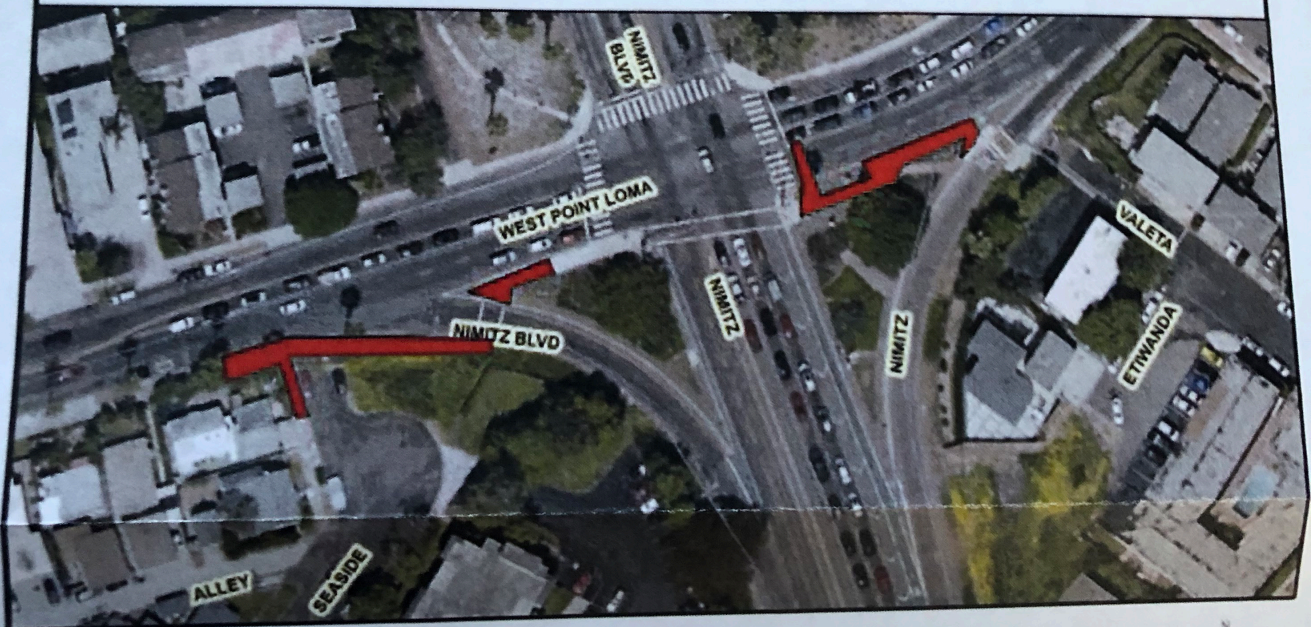
Enclosure: Location Map

CC: Alec Phillipp, Public Information Officer, Communications Dept.
 Council District 2
 Ocean Beach & Peninsula Community Planning Groups

Location Map



Location Map



Legend



ADA SW Group 3E West Point Loma



ADA S/W Group 3E W Point Loma Project