

OCEAN BEACH PLANNING BOARD
TRANSPORTATION BOARD MEETING NOTICE & AGENDA

MONDAY, MAY 25, 2020 6:00 PM

This meeting will be held electronically via Webex. REGISTER FOR THE MEETING BY VISITING <https://tinyurl.com/OBPB-may25-transpo>. You need to include your first name, last initial, email, and zip code. Your contact info will not be shared with others. On the day of the meeting, the URL and password will be sent out to all who have registered. You may also submit public comments in advance of the meeting to: obplanningboard@gmail.com.

- 6:00 pm Call to Order**
- Quorum/Introductions
 - Agenda modifications and approval
 - Minutes modifications and approval. January 27, 2020 minutes located at http://oceanbeachplanning.org/files/2020/01/012720_TransportationSubcommitteeMeeting-Minutes_DRAFT.pdf
- 6:10 pm Non-Agenda Public Comment**
Two minutes per speaker for issues not on the agenda and which fall within the purview of the transportation subcommittee.
- 6:20 pm Action Item #1: Elect Officers**
The committee will elect a Chair and Secretary
- 6:40 pm Action Item #2: SLOW Children Crossing Signage for Bethany Lutheran Church**
Discuss implementing signage in alley between Cape May and Brighton at Sunset Cliffs.
Item brought by OBPB Board Member Virginia Wilson
- 7:00 pm Action Item #3: Diagonal Motorcycle Parking for OB Business Corridors**
Continuation of discussion to request adding diagonal motorcycle parking on Voltaire, Newport and Santa Monica.
- 7:20 pm Action Item #4: Temporarily Close Vehicle Traffic on Newport St. to Accommodate Additional Restaurant Seating During COVID-19 Recovery**
Discuss implementation of a temporary closure of Newport Street to aid restaurants in reopening while they accommodate COVID-19 physical distancing requirements.
Item brought by OBPB Board Member Nicole Ueno
- 7:40 pm Information Item #1: Follow Up from Andrea Regarding Bike Path Repaving**
- 7:50 pm Information Item #2: West Point Loma & Bacon CIP: Roundabout and sidewalk improvements**
- 8:00 pm Adjourn**

Next meeting July 27, 2020

For more information please contact:

Tracy Dezenzo
Chair OBPB Transportation Subcommittee
tracyobpb@gmail.com / 619-273-3638
4876 Santa Monica Avenue #133
San Diego, CA 92107
oceanbeachplanning.org



From: Virginia Wilson [REDACTED]

Subject: Transportation Committee request

Date: February 12, 2020 at 6:48 PM

To: Tracy Dezenzo [REDACTED]

Cc: Nicholas K. Wilson (Nick) [REDACTED]

Hi Tracy,

As you may know, Bethany Lutheran Church operates a preschool on its property. Parents commonly drop off and pick up children within the church parking lot, which is accessed through the alley between Cape May and Brighton, at Sunset Cliffs.

We are concerned about the safety of the children. Nick spends quite a bit of time working in our garage, open to the alley. He often sees drivers racing up the alley, presumably frustrated by, and trying to escape, the traffic backed up on NB Sunset Cliffs. He also just saw someone slam the back of his car into a pole right there.

He would like to have signs visible to drivers entering the alley from both Sunset Cliffs and from Ebers, stating "SLOW, School, Children, or...?". Is that something the Transportation Committee might consider asking the Planning Board to vote on?

If you think so, I can provide more detail. If not, what course of action do you recommend? (Aside from the Get it Done, aka 'Get Over It' app)

Thank you,

Virginia

Sent from [Mail](#) for Windows 10

Ocean Beach Commercial District Motorcycle/Moped Parking Proposal

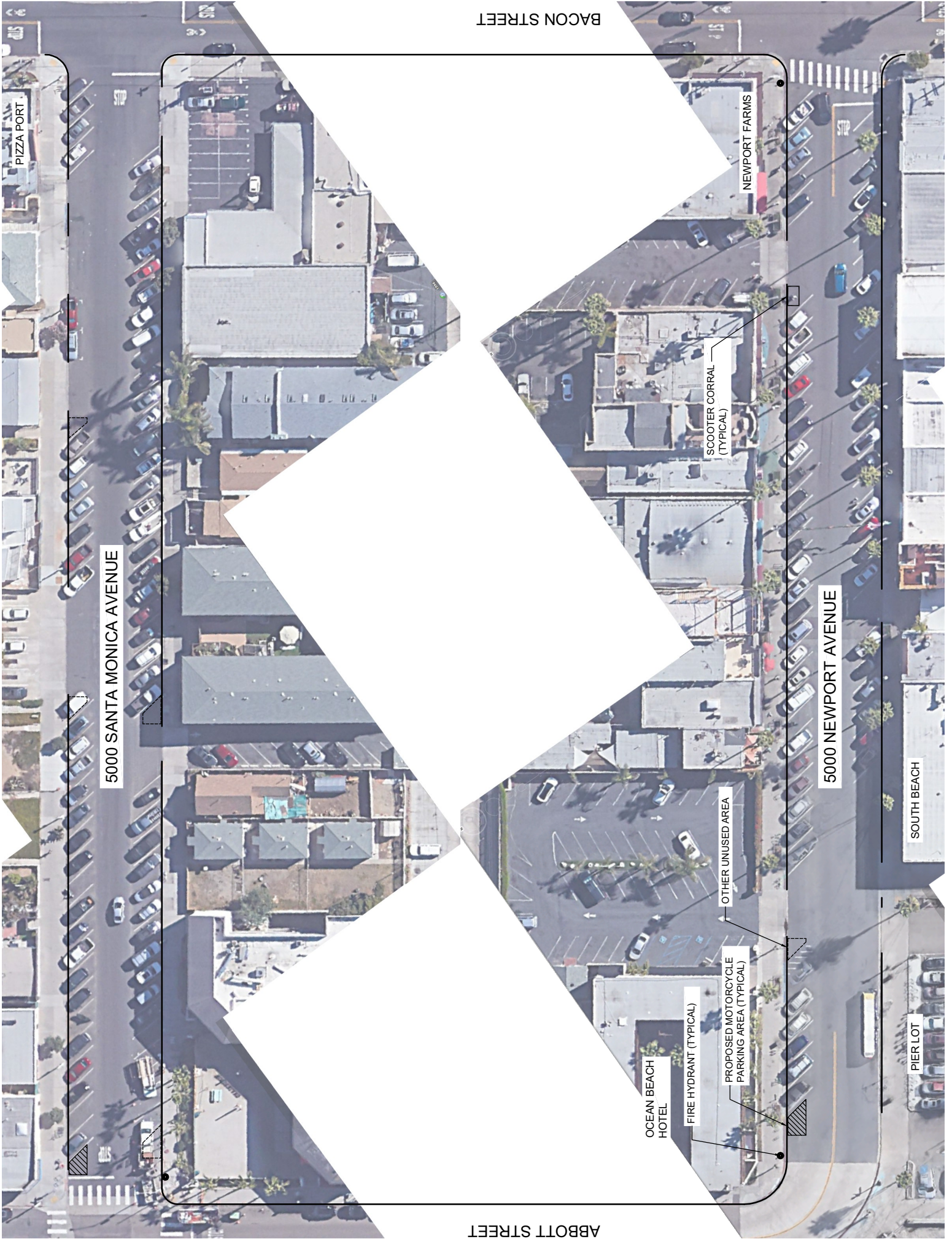
3/11/20

Street parking in the business districts of Ocean Beach is predominantly diagonal parking¹. It does not accommodate users of 2-wheeled vehicles such as motorcycles, mopeds, and the growing number of personal electric vehicles such as Zebra mopeds that cannot use bicycle racks. These users currently have to search for a full car parking space. This discourages the use of 2-wheeled vehicles and impacts car parking. In other parts of town, typical parallel parking arrangements allow 2-wheeled vehicles to fit between cars or on the ends, without reducing car parking spots. Parking for 2-wheeled vehicles should be embraced, especially since they offer reduced congestion, and reduced greenhouse gas emissions when compared to the typical automobile.²

We propose adding designated motorcycle/moped parking areas along Newport Ave, Santa Monica Ave, and Voltaire Ave as shown on the map below. These are generally located at the ends of existing diagonal parking and offer 3 or more motorcycle spots at each location. Currently these locations have red curbs but are not adjacent to fire hydrants or in a visibility area for driveway entrances. The map excludes locations recently designated as scooter-share corrals, but in the event any corrals are removed those locations should also be considered.

¹ Newport Ave, Santa Monica Ave, Voltaire Ave

² LCA motorcycle: Cox, B. L, and Mutel, C. L. (2018). The environmental and cost performance of current and future motorcycles. Applied Energy Volume 212, 15 February 2018, Pages 1013-1024



PIZZA PORT

5000 SANTA MONICA AVENUE

NEWPORT FARMS

SCOOTER CORRAL
(TYPICAL)

5000 NEWPORT AVENUE

SOUTH BEACH

PIER LOT

OCEAN BEACH
HOTEL

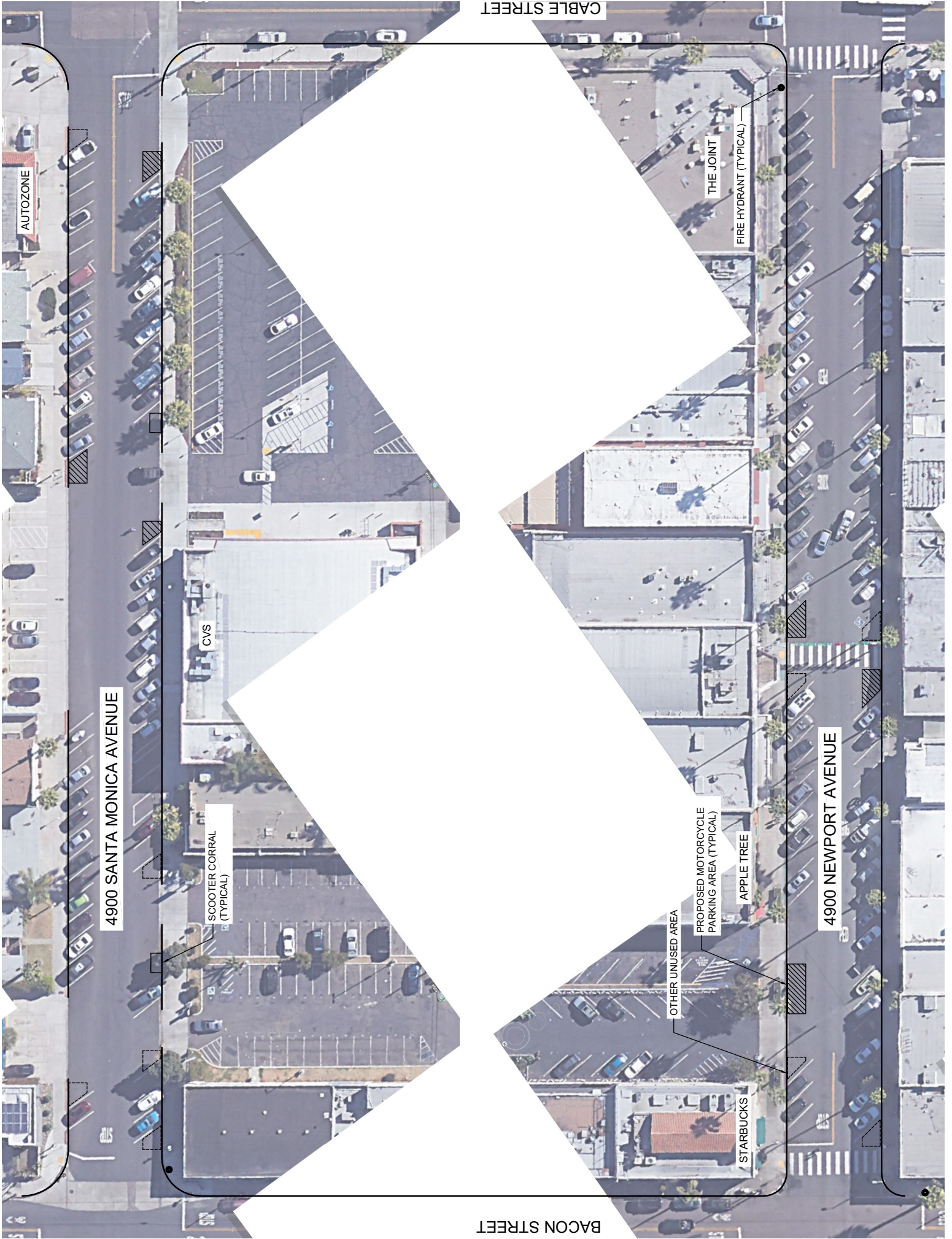
FIRE HYDRANT (TYPICAL)

PROPOSED MOTORCYCLE
PARKING AREA (TYPICAL)

OTHER UNUSED AREA

ABBOTT STREET

BACON STREET



AUTOZONE

4900 SANTA MONICA AVENUE

SCOOTER CORRAL
(TYPICAL)

CVS

STARBUCKS

OTHER UNUSED AREA

PROPOSED MOTORCYCLE
PARKING AREA (TYPICAL)

APPLE TREE

THE JOINT

FIRE HYDRANT (TYPICAL)

4900 NEWPORT AVENUE

BACON STREET

CABLE STREET



LIBRARY

POST OFFICE

TARGET

SCOOTER CORRAL
(TYPICAL)

OTHER UNUSED AREA

PROPOSED MOTORCYCLE
PARKING AREA (TYPICAL)

ARCO

FIRE HYDRANT (TYPICAL)

4800 SANTA MONICA AVENUE

4800 NEWPORT AVENUE

CABLE STREET

Sign in



Search Google Maps



See travel times, traffic and nearby places



Lotus St

Voltaire St

Voltaire St

Voltaire St

Voltaire St

Voltaire St

Clubstyle DJ
Private Services
Temporarily closed

Voltaire St

Voltaire St

Voltaire St

Voltaire St

Voltaire St

Voltaire St

Voltaire St

Voltaire St

Voltaire St

Voltaire St

Voltaire St

Voltaire St

Voltaire St

Voltaire St

Voltaire St

Voltaire St

Voltaire St

Voltaire St

Voltaire St

Voltaire St

Voltaire St

The Poor Golfer
Temporarily closed

Ocean Beach
Brazilian Jiu-jitsu

Wonderland
Coin Laundry

Sharp Eye
Surfboards Outlet

Muir Ave

Muir Ave

Muir Ave

Muir Ave

Surf Rider Pizza Co
Takeout • Delivery

Muir Ave

Muir Ave

Muir Ave

Muir Ave

Muir Ave

Muir Ave

Muir Ave

Muir Ave

Muir Ave

Muir Ave

Muir Ave

Muir Ave

Muir Ave

Muir Ave



Google

Ocean Beach
Equipment Rentals

7-Eleven
Delivery

OB Suds Car Wash
(Self-Service)





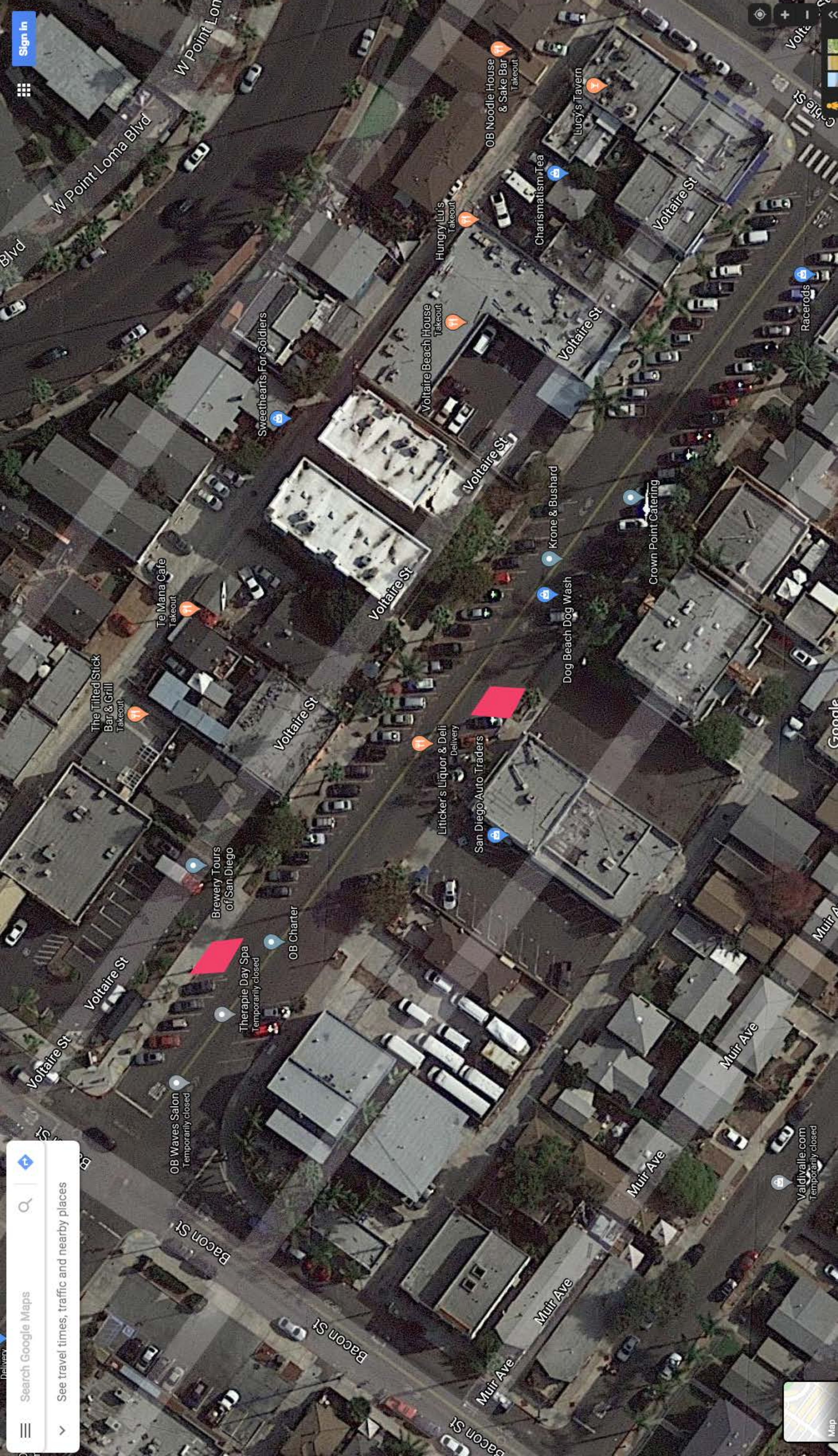
Search Google Maps



See travel times, traffic and nearby places



Sign in



Bacon St

Voltaire St

Voltaire St

Voltaire St

Voltaire St

W Point Loma Blvd

OB Waves Salon
Temporarily closed

Therapie Day Spa
Temporarily closed

OB Charter

Brewery Tours
of San Diego

The Tilted Stick
Bar & Grill
Takeout

Tei Mana Cafe
Takeout

Sweethearts For Soldiers

Liticker's Liquor & Deli
Delivery

San Diego Auto Traders

Voltaire Beach House
Takeout

Hungry Lu's
Takeout

OB Noodle House
& Sake Bar
Takeout

Charismatism Tea

Lucy's Tavern

Krone & Bushard

Dog Beach Dog Wash

Crown Point Catering

Bacon St

Muir Ave

Muir Ave

Muir Ave

Muir Ave

Muir Ave

Muir Ave

Muir Ave

Muir Ave

Muir Ave

Muir Ave

Muir Ave

Muir Ave

Muir Ave

Muir Ave

Muir Ave

Valdivalle.com
Temporarily closed



Racerods

Voltaire St

Voltaire St

Voltaire St

Voltaire St

Voltaire St

Voltaire St

Voltaire St

Voltaire St

Voltaire St

Voltaire St

Voltaire St

Voltaire St

Voltaire St

Voltaire St

Voltaire St

Voltaire St

Voltaire St



May 20, 2020

The Honorable Kevin Faulconer
Mayor
City of San Diego
202 C Street, 11th Floor
San Diego, CA 92101

Curbside San Diego: A Pilot Program for Creative and Flexible Use of Public Right-of-Way, Helping Businesses During Downtown’s Economic Recovery

Dear Mayor Faulconer,

Based on Governor Newsom’s recent announcement to allow some counties and municipalities to transition to Phase II and Phase III reopening, it is imperative the City of San Diego implement measures that best allow for these businesses to resume operations, once permissible under State and County public health and safety guidelines. Your administration and the City Council have been leaders in innovative initiatives, such as the Development Services Department’s online permitting system, increasing mobility and bike lanes throughout the city, a commitment to climate action goals, and streamlining permitting processes for affordable housing. The COVID-19 pandemic demands similar bold action for streamlining regulations related to our small businesses, restaurants and retail establishments.

To achieve this goal, we have identified specific recommendations for the creative and flexible use of the public right-of-way (PROW) and private spaces that allow for sustainable business activity and a more walkable urban core. With more than 35,000 residents in Downtown, this program would first target and provide neighborhoods with enhanced dining and active public space, while maintaining appropriate physical distancing. It is imperative for the recovery of our restaurants and retail that the Curbside San Diego pilot program be implemented thoughtfully and swiftly with streamlined permitting and as little permitting costs associated with the process as possible. Our commercial zones are suffering, and these zones provide thousands of jobs, important services, and social and entertainment outlets for our residents and visitors. We would respectfully request that pilot areas be identified by June in order to test these concepts. We stand ready to assist with implementation.

What is Curbside San Diego?

Curbside San Diego is a vision for pop-up placemaking and activation programs that alter the public right-of-way to allow dining and physical distancing within designated zones in Downtown San Diego. This innovative program could be a key part of Downtown’s economic recovery. The design and configuration of each Curbside San Diego location would be slightly different and responsive to each neighborhood’s unique needs. Curbside San Diego would in some cases be actively managed and programmed by the Downtown San Diego Partnership and

in other cases, by respective neighborhood business districts, such as the Little Italy Association's "Al Fresco" dining program. The following is the initial list of sites we would like to prioritize, however additional locations may be requested in the future and current locations may be amended as needed. These sites were specifically chosen as they have overwhelming merchant support, have plans and support infrastructure in place to implement the program, and consider issues related to ADA, public safety, public transit, and commercial loading zones. We are committed to working with you on developing a suitable plan that works for each street identified.

Gaslamp Quarter

- Location - Fifth Avenue between K Street and Broadway.
- Programming - Tables, live music, art, and retail amenities.
- Schedule - Friday evening through Sunday. Full street closure with access lane for public safety.

East Village

- Location - J Street between 6th Avenue and Park Boulevard.
- Programming - Tables, live music, entertainment, bike corrals, and art.
- Schedule - Friday evening through Sunday. Full street closure with access lane for enhanced mobility options and public safety.

Columbia

- Location - Columbia Street between B Street and C Street.
- Programming - Tables, live music, art, etc.
- Schedule - Friday evening through Sunday. One travel lane and one parking lane.

Little Italy

- Location - India Street between Beech Street and Grape Street.
- Programming - Tables, live music, art, etc.
- Schedule - Saturdays. Full street closure with access lane for public safety.

City Center

- Location - B Street between 6th Avenue and 7th Avenue.
- Programming - Tables, bike corrals, live music.
- Schedule - Monday through Friday, one parking lane.

Cortez

- Location - South side of Ash Street between 8th Avenue and 7th Avenue.
- Programming - Seating and designated queuing area.
- Schedule - 7-day closure, parking lane and one vehicular lane. Through traffic lanes will remain open.

San Diego's restaurants and small retail establishments are part of the social fabric of our great city and we believe this creative approach will best allow for their continued operation given the current physical distancing restrictions enacted in response to the pandemic. Additionally, the full and partial closure of streets will enhance downtown's bike and pedestrian experience by providing added space to safely navigate and explore our urban neighborhoods. San Diego's Mediterranean climate further increases the chances that these recommendations can be successfully implemented. We appreciate your steady leadership during this difficult time for our

community and request your swift action in support of the Curbside San Diego pilot project, which will begin to sow the seeds of a sustained economic recovery in San Diego.

Curbside San Diego would also provide a template to support the use of public streets and private spaces for restaurants and retail in other areas of the city. We understand and embrace equity in this process and assisting commercial areas outside of existing Downtown boundaries is essential. We are committed to working with your administration, the County of San Diego, MTS, the San Diego BID alliance, and Alcohol Beverage Control to support this pilot initiative in Downtown and throughout the region.

We look forward to working with you on the Curbside San Diego initiative.

Sincerely,



Betsy Brennan
President & CEO
Downtown San Diego Partnership



Colin Parent
Executive Director
Circulate San Diego



Michael Trimble
Executive Director
Gaslamp Quarter Association



Chris Duggan
Director of Local Government Affairs
California Restaurant Association



Diane Peabody-Straw
Executive Director
East Village Association



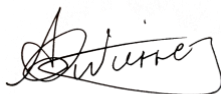
Jerry Sanders
President & CEO
San Diego Regional Chamber of Commerce



Ann Murphy
Chair
Cortez Hill Active Residents Group



Elvin Lai
President
San Diego Lodging Association



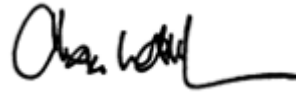
Alex Gutierrez
Director of Special Districts
City Center Business Improvement District



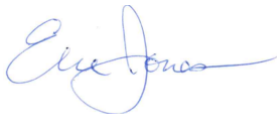
Nicole Capretz
Founder, Executive Director
Climate Action Campaign



Andy Hanshaw
Executive Director
San Diego Bicycle Coalition



Marco Li Mandri
Chief Executive Administrator
Little Italy Association



Eric Jones
Chair
Columbia Foundation

cc: City Council President Gomez and Councilmembers
Conrad Wear, Policy and Council Affairs, Office of the Mayor
Elyse Lowe, Director, Development Services Department
Christina Bibler, Director, Economic Development Department
James Nagelvoort, Director, Public Works Department

April 28, 2020

Subject: ADA S/W Group 3E W Point Loma Project

Dear Resident:

The City of San Diego is at the final stage of the design phase for ADA S/W Group 3E West Point Loma project located in the public right-of-way. This project will provide a roundabout and missing sections of sidewalks and curb ramps at the Bacon Street & West Point Loma Boulevard intersection. The project will also construct a complete pedestrian path along West Point Loma Blvd. from Seaside Street to Valeta Street through the Nimitz Boulevard & West Point Loma Boulevard intersection.

- **Project Name – ADA S/W Group 3E W Point Loma**
- **Construction Schedule** – Construction is anticipated to begin in Winter 2020 and will be completed in Spring 2022.
- **Normal Construction Days & Hours** - Monday through Friday from 7:00 a.m. to 3:30 p.m.
- **Construction Notices** – You will receive a mailed notice prior to the start of construction. In addition, the City's contractor will deliver a door hanger with the approximate date that construction will begin to the area surrounding the project.
- **Street Access and Parking** – Traffic control will be implemented during construction; access to homes and businesses will be maintained at all times.
- **Questions or Concerns** – For information about the Capital Improvements Program please visit www.sandiego.gov/cip. For project-specific questions contact the **Public Works Department** at **(619) 533-4207** or email engineering@sandiego.gov. Please reference ADA S/W Group 3E W Point Loma Project in your inquiry.

Thank you for your patience and cooperation during the design and construction of this important improvement project.

Sincerely,

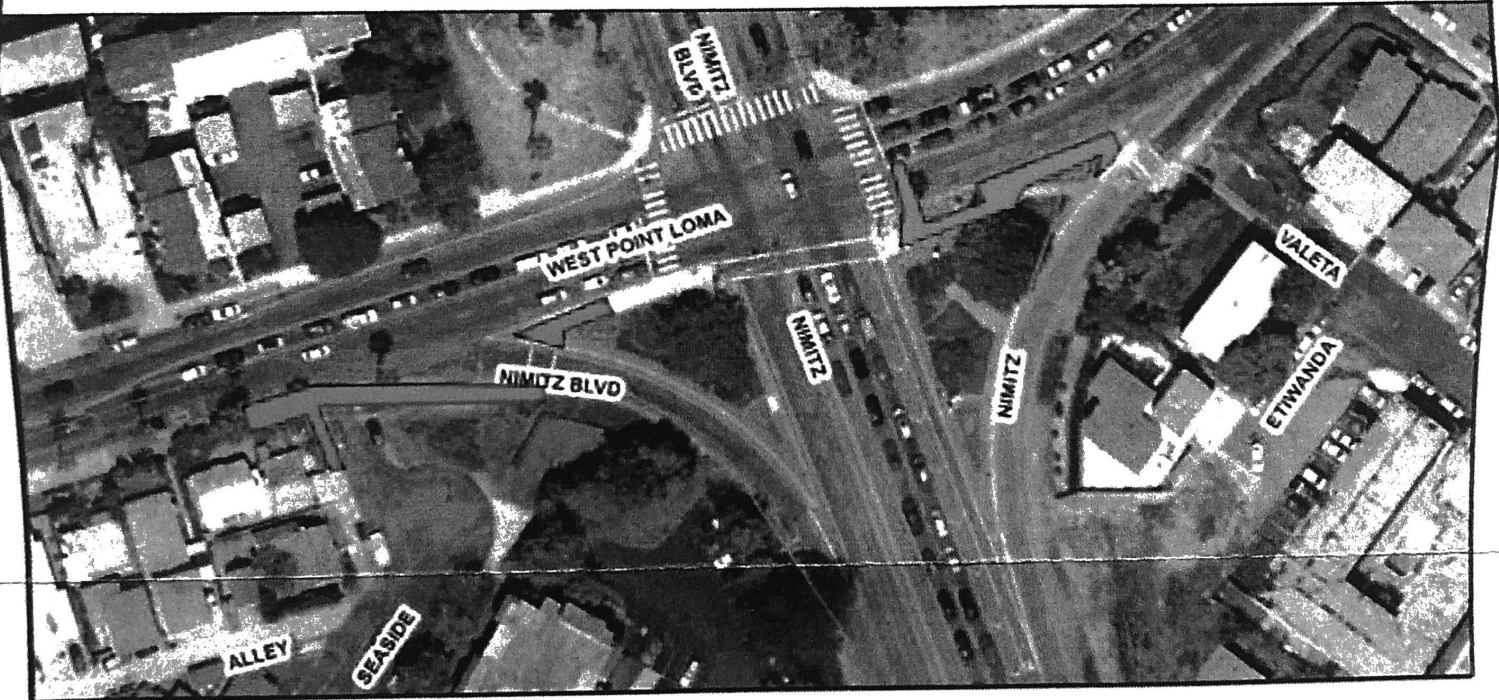


Steven Bliss
Project Manager

Enclosure: Location Map

CC: Alec Phillipp, Public Information Officer, Communications Dept.
 Council District 2
 Ocean Beach & Peninsula Community Planning Groups

Location Map



Legend

 ADA SW Group 3E West Point Loma



ADA S/W Group 3E W Point Loma Project